

LEGEND

	< 8		< 8 ft		Green Passing		Green		AIS Green CAN
	8 - 9		8 - 9 ft		Red Passing		Red		AIS Red NUN
	9 - 9.5		9 - 10 ft		Green Crossing		Green CAN		Red NUN
	9.5 - 10		10 - 12 ft		Red Crossing		Junction		
	10 - 12		River Mile						
	12 - 14		Sailing Line						
	14 - 16		BSNP Structure						
	> 16		Levee						

Buoy

AIS Green CAN
 AIS Red NUN
 Green CAN
 Red NUN

NOTES:
Horizontal Coordinate System:
World Geodetic System of 1984 (WGS84), projected to the Universal Transverse Mercator (UTM) Zone 15 North. Distance units in U.S. Survey Feet
Vertical Datum:
Soundings are shown in feet and indicated depths are referenced to water surface at time of collection.
The information depicted on this map represents the results of a survey conducted on the date indicated and can only be considered to represent the general condition existing at that time.
The location of navigation aids are based on and provided by the U.S. Coast Guard.

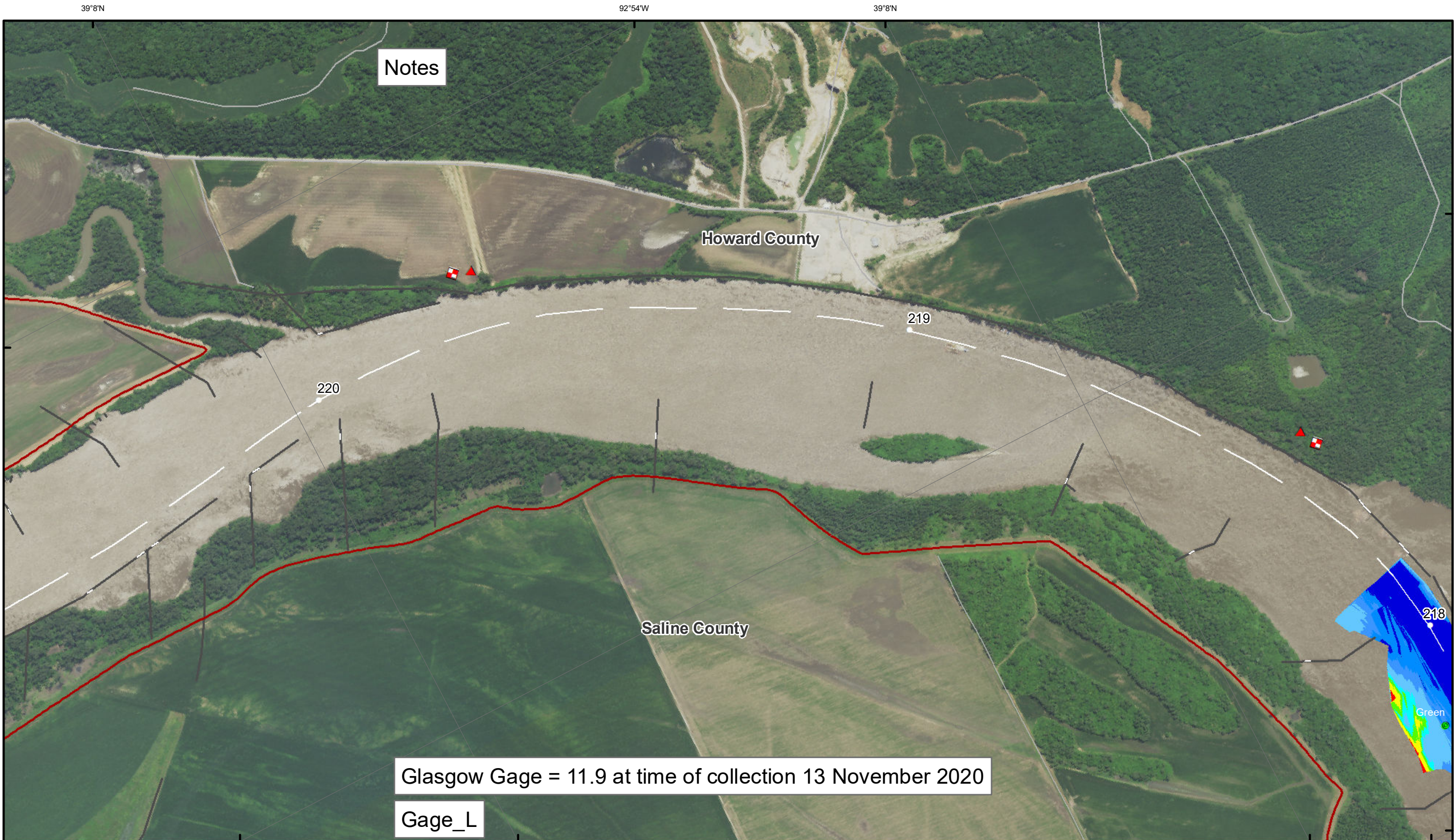


DISCLAIMER: The U.S. Army Corps of Engineers (USACE) provides this information as a service to the public. It is not intended to be used for any purpose other than that for which it was intended. The USACE makes no warranty, express or implied, regarding the accuracy, reliability, or completeness of the information. The USACE is not responsible for any errors or omissions in this information. The USACE is not liable for any damages, including consequential damages, arising from the use of this information. The USACE is not responsible for any actions taken based on this information. The USACE is not responsible for any actions taken based on this information.

KANSAS CITY DISTRICT MISSOURI RIVER AREA OFFICE	
Submitted By:	MRAO
Reviewed By:	MRAO
Approved By:	MRAO

Survey Information
MO_03_LMR
MO_03_LMR_20201113_CS_216_8_218_1_SORT
13 November 2020

Sheet Number
7 of 42



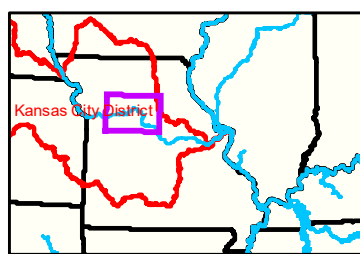
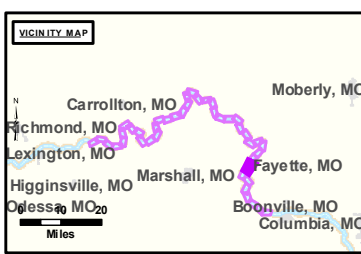
Notes

Howard County

Saline County

Glasgow Gage = 11.9 at time of collection 13 November 2020

Gage_L

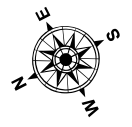


LEGEND

	< 8		< 8 ft		Green Passing		Green		AIS Green CAN
	8 - 9		8 - 9 ft		Red Passing		Red		AIS Red NUN
	9 - 9.5		9 - 10 ft		Green Crossing		Green CAN		Red NUN
	9.5 - 10		10 - 12 ft		Red Crossing		Junction		
	10 - 12		River Mile						
	12 - 14		Sailing Line						
	14 - 16		BSNP Structure						
	> 16		Levee						

Buoy

0 312.5 625 937.5 1,250 2,500 Feet



NOTES:
 Horizontal Coordinate System:
 World Geodetic System of 1984 (WGS84), projected to the Universal Transverse Mercator (UTM) Zone 15 North. Distance units in U.S. Survey Feet

Vertical Datum:
 Soundings are shown in feet and indicated depths are referenced to water surface at time of collection.

The information depicted on this map represents the results of a survey conducted on the date indicated and can only be considered to represent the general condition existing at that time.

The location of navigation aids are based on and provided by the U.S. Coast Guard.



DISCLAIMER: The U.S. Army Corps of Engineers (USACE) provides this information for informational purposes only. It is not intended for use in any legal proceeding or as a basis for any claim. The USACE makes no warranty, express or implied, regarding the accuracy, completeness, or reliability of the information provided. The user assumes all liability for any use of this information. The USACE is not responsible for any errors or omissions in this information. The USACE is not liable for any damages, including consequential damages, arising from the use of this information. The USACE is not responsible for any loss of data or information. The USACE is not responsible for any loss of profit or business. The USACE is not responsible for any loss of income. The USACE is not responsible for any loss of reputation. The USACE is not responsible for any loss of time. The USACE is not responsible for any loss of opportunity. The USACE is not responsible for any loss of benefit. The USACE is not responsible for any loss of advantage. The USACE is not responsible for any loss of interest. The USACE is not responsible for any loss of honor. The USACE is not responsible for any loss of respect. The USACE is not responsible for any loss of dignity. The USACE is not responsible for any loss of prestige. The USACE is not responsible for any loss of status. The USACE is not responsible for any loss of position. The USACE is not responsible for any loss of rank. The USACE is not responsible for any loss of title. The USACE is not responsible for any loss of office. The USACE is not responsible for any loss of authority. The USACE is not responsible for any loss of power. The USACE is not responsible for any loss of jurisdiction. The USACE is not responsible for any loss of control. The USACE is not responsible for any loss of management. The USACE is not responsible for any loss of administration. The USACE is not responsible for any loss of organization. The USACE is not responsible for any loss of system. The USACE is not responsible for any loss of method. The USACE is not responsible for any loss of process. The USACE is not responsible for any loss of procedure. The USACE is not responsible for any loss of practice. The USACE is not responsible for any loss of custom. The USACE is not responsible for any loss of usage. The USACE is not responsible for any loss of observance. The USACE is not responsible for any loss of observance. The USACE is not responsible for any loss of observance. The USACE is not responsible for any loss of observance.

KANSAS CITY DISTRICT MISSOURI RIVER AREA OFFICE	
Submitted By:	MIRAO
Reviewed By:	MIRAO
Checked By:	MIRAO

Survey Information

MO_03_LMR
 MO_03_LMR_20201113_CS_216_8_218_1_SORT
 13 November 2020

Sheet Number
 8 of 42